

# Base Extrusion 2-3-S Channel

## Details:

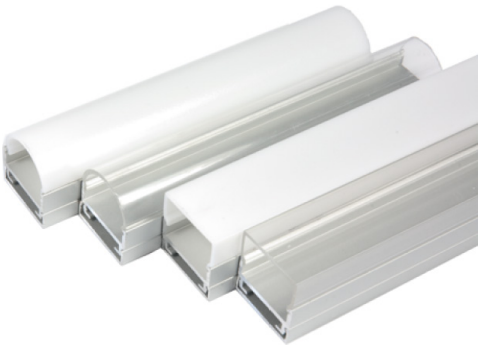
- Versatile aluminum profile for use with Series LL2 LED Engines.
- Stocked in 96" lengths but can be factory cut and assembled based on project requirements.

## Standard Options:

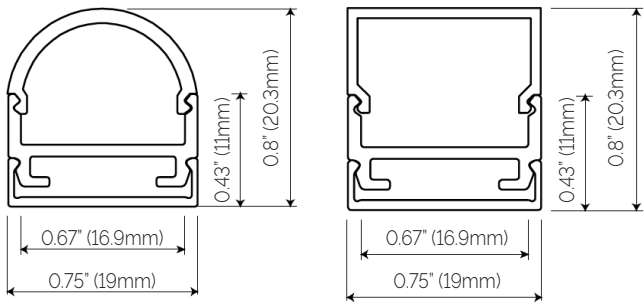
- Factory cut lengths to 1/8" Increments.
- Complete factory assembly with any Series LL2 LED Engines.
- 96" Power Leads

## Custom Options:

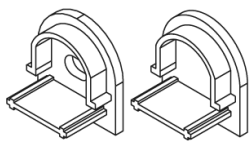
- Factory applied Magnet Strips "MAG"
- RAL Finishes available "RAL"
- Factory applied color filters (Rosco)



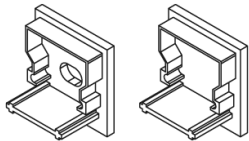
## Cross Sections:



## Accessories:



End Cap (Pair, Curved Lens) #ECC



End Cap (Pair, Flat Lens) #ECF

## Profile:

Standard finish is Anodized Aluminum

RAL Finishes available - Please specific Tiger Drylac #  
Example RAL9010-WHITE

RAL Finishes are quoted on a per project basis

## Lenses:

**Clear** - Allows for maximum LED efficiency. This should not be used in applications that are either direct view or where reflective surfaces would allow for LED imaging.

**Frosted** - Reduced LED Efficiency but shields LED diodes from reflective imaging. Do not use for direct view applications.

**Opal** - Maximum LED diffusion with a reduction in efficiency. Some tight pitch Series 2 LED's allow for direct view applications.

Lenses snap into the profile and can be easily changed at any time.

## Ordering Information:

Model:	Length:	Lens:	Accessory:	Custom:
<input type="text"/>	<input type="text"/>	<input type="text"/>	<input type="text"/>	<input type="text"/>
BE2-3-S	96" CUSTOM	CC CLEAR, CURVED FC FROSTED, CURVED OC OPAL, CURVED CF CLEAR, FLAT FF FROSTED, FLAT OF OPAL, FLAT	ECC END CAPS, CURVED ECF END CAPS, FLAT	MAG RAL ROSCO

Example: BE2-3-S-96"-FC-ECC-MAG-RAL#9010-WHITE-ROSCO#R08 PALE GOLD