

# Sheetled - Static White

CONVEY

## Details:

- Flat Panel and Bendable LED Sheets for Backlighting Applications.  
Not Recommended for direct view applications.  
Flexible for various applications and field cuttable with scissors.

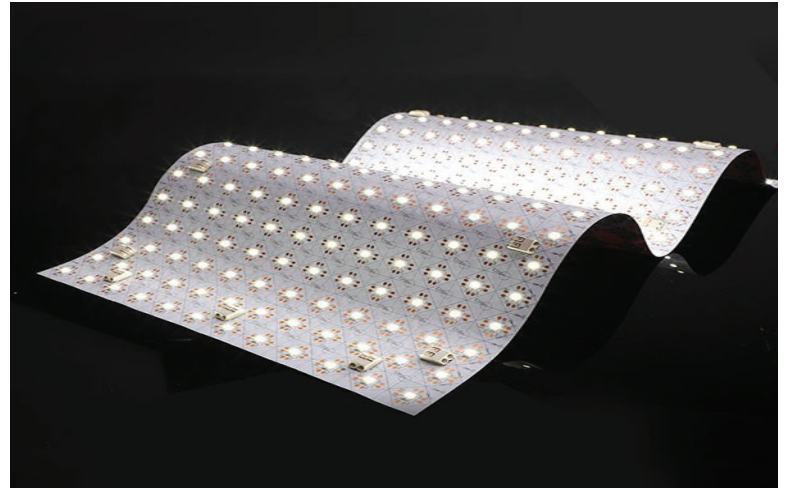
## Features:

- Cut Segments in 0.94"x0.94" Increments.
- 3M (300LSE) yellow adhesive tape attached on backside, standard.
- Factory Cutting and Kiting Suggested.
- Power Leads and Connectors included at no charge.

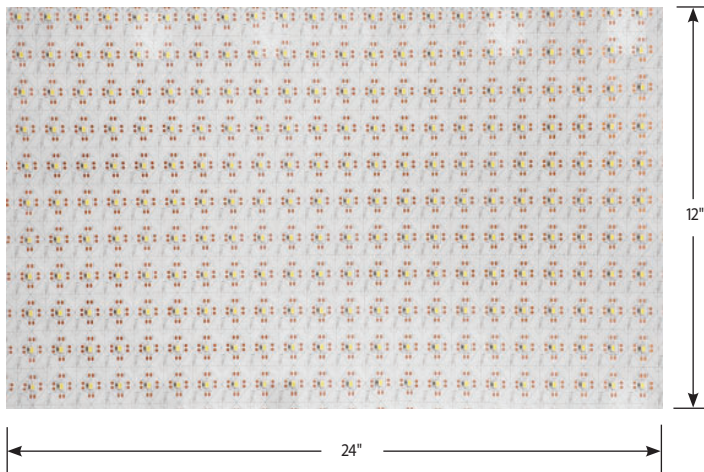
## Lighting Features:

- 120° beam spread
- 50,000hr. Life (L70)
- 90CRI Standard
- TM-30 data available at [www.conveylighting.com](http://www.conveylighting.com)

Also available in Tunable White, RGBW and RGB+TW options



## Dimensions:



## Specifications:

Average Power Consumption	10w/20w/30w/40w Per 12"x24" Sheet
Voltage	24V/dc
Binning	3 step
Cut Increment	1 LED Sections (0.94"x0.94")
Height with XH Connector	0.31"
Max. Connection	240w / 10amp @ 24v
IP Rating	IP20 or IP54 Options
Beam Angle	120 Degrees

Wattage	Lumen Output (lm/ft2.)
10w	810
20w	1590
30w	2350
40w	3440

Data based on  
4000k Output.

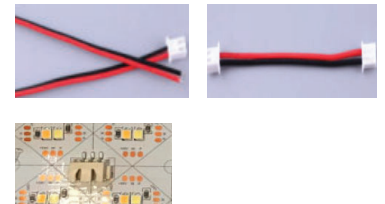
2700k x 0.90  
3000/3500k x 0.95  
4000k+ x 1.00

## Ordering Information:

Example:  
SHEET-SW-27-40-IP20

Model:	CCT(White):	Wattage:	Rating:
<input type="text"/>	<input type="text"/>	<input type="text"/>	<input type="text"/>
SHEET-SW	27 2700K, 90CRI	10 10w Per 12x24	IP20 Dry Location
	30 3000K, 90CRI	20 20w Per 12x24	IP54 Damp Location
	35 3500K, 90CRI	30 30w Per 12x24	
	40 4000K, 90CRI	40 40w Per 12x24	
	50 5000K, 90CRI		
	65 6500K, 90CRI		

## Feed and Connector (Included)



"XH" Connector for secure connections

Power Supply Data Sheet(s)  
T-PSU-UNV (Multi Dim)  
T-PSU-DMX (1 Channel)  
Universal Voltage 24v Driver with  
built in DMX Encoder.

1800k and 2400k available as special order  
Minimum purchase may apply

Convey Lighting  
104 Commerce Circle  
Durham, CT 06422

[www.conveylighting.com](http://www.conveylighting.com)

[info@conveylighting.com](mailto:info@conveylighting.com)



LM-80

