

# Sheetled - Static White

CONVEY

## Details:

- Flat Panel and Bendable LED Sheets for Backlighting Applications.  
Not Recommended for direct view applications.  
Flexible for various applications and field cuttable with scissors.

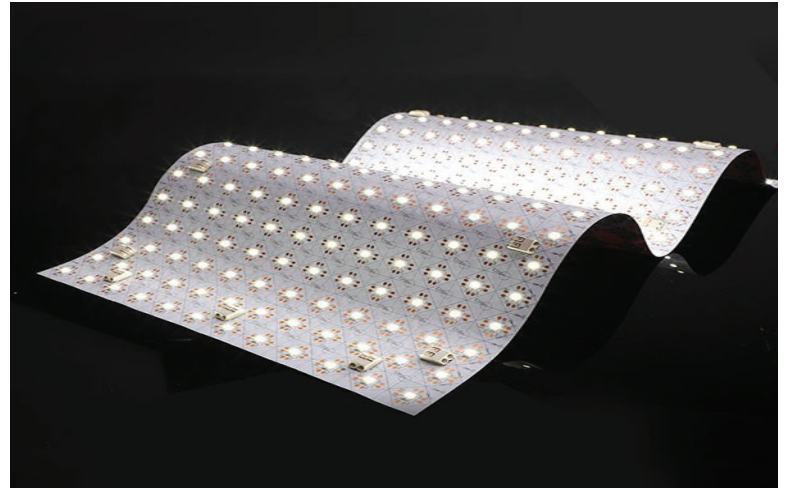
## Features:

- Cut Segments in 0.94"x0.94" Increments.
- 3M (300LSE) yellow adhesive tape attached on backside, standard.
- Factory Cutting and Kiting Suggested.
- Power Leads and Connectors included at no charge.

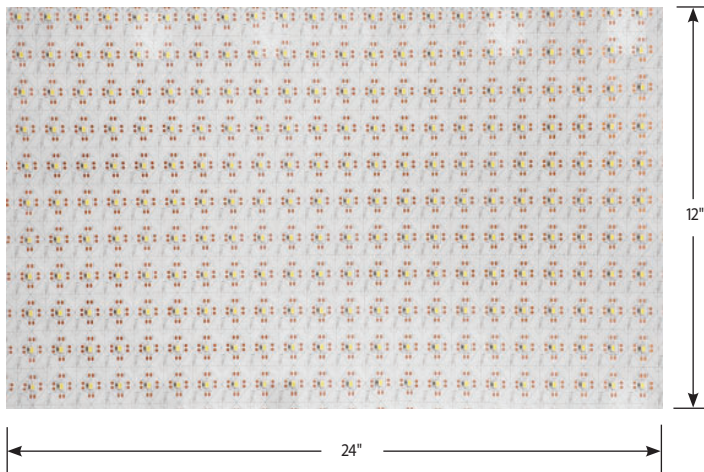
## Lighting Features:

- 120° beam spread
- 50,000hr. Life (L70)
- 90CRI Standard
- TM-30 data available at [www.conveylighting.com](http://www.conveylighting.com)

Also available in Tunable White, RGBW and RGB+TW options



## Dimensions:



## Specifications:

Average Power Consumption	10w/20w/30w/40w Per 12"x24" Sheet
Voltage	24V/dc
Binning	3 step
Cut Increment	1 LED Sections (0.94"x0.94")
Height with XH Connector	0.31"
Max. Connection	240w / 10amp @ 24v
IP Rating	IP20 or IP54 Options
Beam Angle	120 Degrees

Wattage	Lumen Output (lm/ft2.)
10w	810
20w	1590
30w	2350
40w	3440

Data based on  
4000k Output.

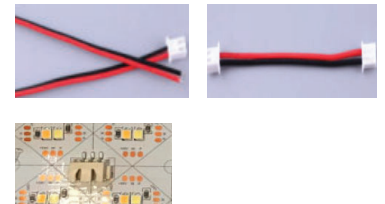
2700k x 0.90  
3000/3500k x 0.95  
4000k+ x 1.00

## Ordering Information:

Example:  
SHEET-SW-27-40-IP20

Model:	CCT(White):	Wattage:	Rating:
<input type="text"/>	<input type="text"/>	<input type="text"/>	<input type="text"/>
SHEET-SW	27 2700K, 90CRI	10 10w Per 12x24	IP20 Dry Location
	30 3000K, 90CRI	20 20w Per 12x24	IP54 Damp Location
	35 3500K, 90CRI	30 30w Per 12x24	
	40 4000K, 90CRI	40 40w Per 12x24	
	50 5000K, 90CRI		
	65 6500K, 90CRI		

## Feed and Connector (Included)



"XH" Connector for secure connections

Power Supply Data Sheet(s)  
T-PSU-UNV (Multi Dim)  
T-PSU-DMX (1 Channel)  
Universal Voltage 24v Driver with  
built in DMX Encoder.

1800k and 2400k available as special order  
Minimum purchase may apply

Convey Lighting  
104 Commerce Circle  
Durham, CT 06422

[www.conveylighting.com](http://www.conveylighting.com)

[info@conveylighting.com](mailto:info@conveylighting.com)



LM-80



Details:

- Standard model is UL listed for Dry, Damp and Wet Location Use.
- Multiple electrical knockouts with easily removable wiring compartment cover.
- Durable powdercoated black finish - option finished available for open ceiling applications - Consult factory with RAL finish needed.
- Compatible with any of Conveys 24v Constant Voltage Products.
- Separated High and Low Voltage wiring compartments.

Dimming Features:

- 0-10v Dimming - 120/277v Input.
- Triac and ELV (Forward and Reverse Phase) Dimming @ 120v.
- 277v dimming requires use of 0-10v Dimming Wires. Otherwise non-Dimming @ 277v.

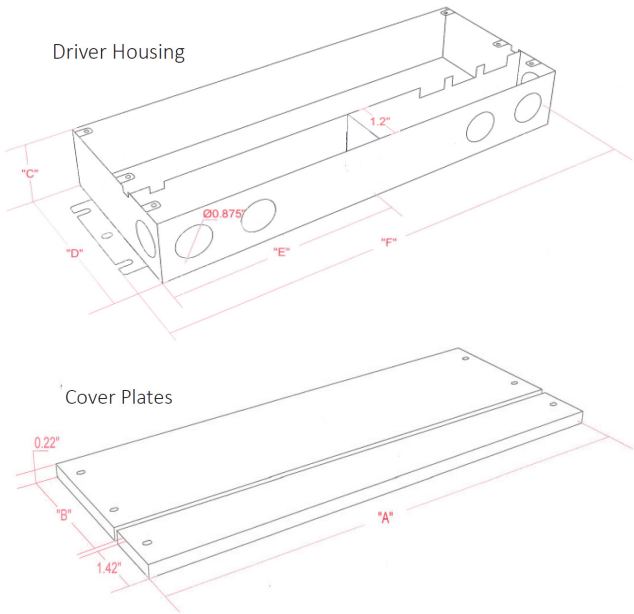
Optional Factory Installed Items:

- On Board 0-10v Potentiometer for individual driver dim levels.
- Lutron Vive Dimmable Power Pak - Not Factory Programmed.
- Casambi CBU Series Controllers - Specify Controller Needed.
- Cord/Plug - 9' 16/3 SJ Cord with Grounded Plug.
- MC Flex - 9' 14/3 MC Cable Flex.
- RAL Finish - For applications where drivers could be visible.



Dimensions (Inches) and Weight (lbs) Data: (Subject to Change)

Profile:



Model	Weight	"A"	"B"	"C"	"D"	"E"	"F"
1x30	1.9	5.94"	2.32"	1.54"	3.54"	2.91"	6.50"
1x60	2.3	6.85"	2.32"	1.54"	3.54"	3.39"	7.40"
1x96	3.0	8.07"	2.32"	1.54"	3.54"	3.97"	8.66"
1x120	3.0	8.07"	2.32"	1.54"	3.54"	3.97"	8.66"
1x150	4.0	9.41"	2.72"	1.73"	3.94"	4.65"	10.24"
1x200	4.0	9.41"	2.72"	1.73"	3.94"	4.65"	10.24"
1x300	5.5	10.12"	2.91"	1.73"	4.13"	4.96"	10.94"
2x96	4.7	10.12"	2.91"	1.73"	4.13"	4.96"	10.94"
3x96	5.5	11.06"	2.91"	1.73"	4.13"	5.39"	11.85"
4x96	5.7	11.93"	2.91"	2.05"	5.51"	4.72"	12.72"

Ordering Information:

Example:  
T/PSU-24-1X96W-UNV-LUT

Model:

—

Output Wattage:

—

Dimming:

—

Options:

T/PSU-24

- 1x30W  
1x60W  
1x96W  
1x120W  
1x150W  
1x200W  
1x300W  
2x96W (\*)  
3x96W (\*)  
4x96W (\*)

UNV

- POT 0-10V POTENTIOMETER  
LUT LUTRON VIVE  
CAS CASAMBI MODULE  
CP9 9' CORD/PLUG  
FLEX 9' MC CABLE FLEX  
RAL CUSTOM PAINT

Refer to Covey Wiring  
Diagrams for various  
Dimming Protocols.

CP9,FLEX and RAL can  
be included with other  
options

(\*) Single Input



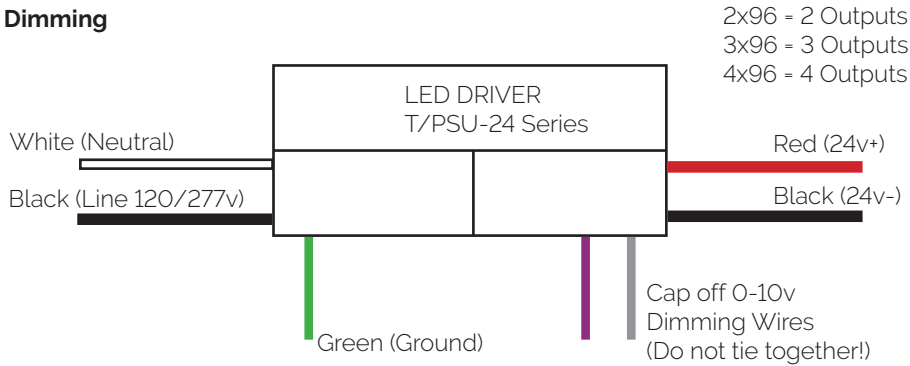
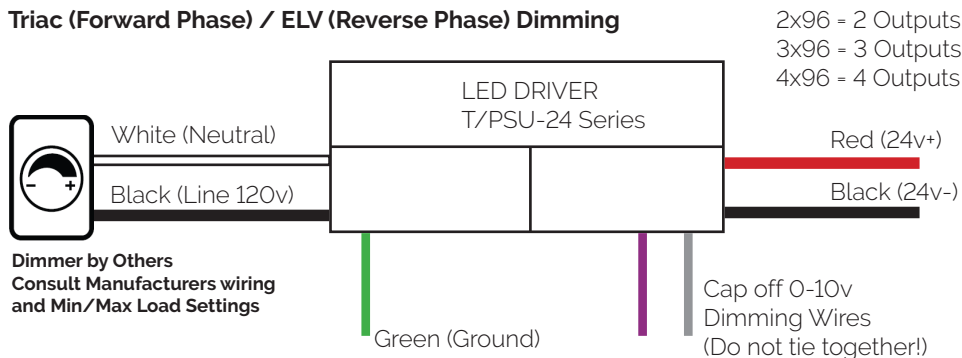
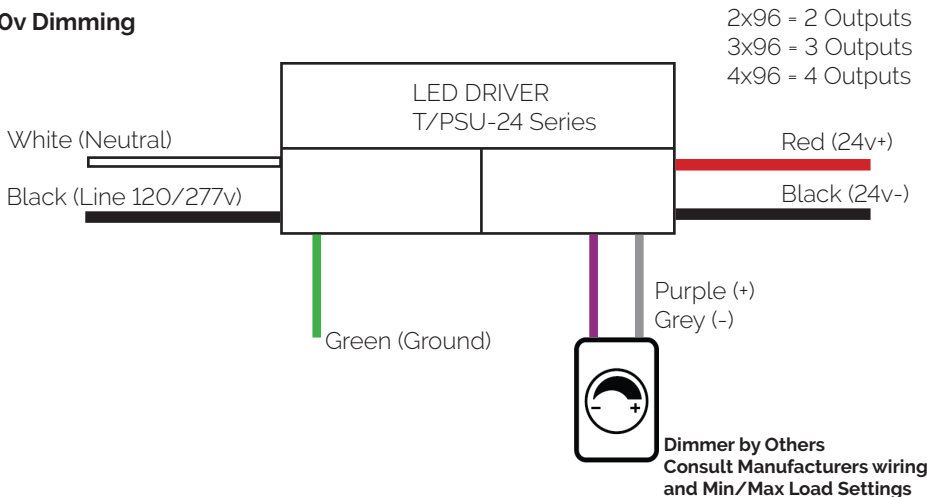


3x96 Shown

Convey Drivers feature separate input (120/277v) and output (24v and 0-10v Dimming) wiring compartments.

Drivers should be installed in a ventilated space and by a qualified electrician. Local and National Electrical Codes should be followed.

Installing contractor shall use appropriate wire connectors based on the application (Dry, Damp, Wet Location).

**Non Dimming****Triac (Forward Phase) / ELV (Reverse Phase) Dimming****0-10v Dimming****Electrical Data**

Model	Amps @ 120v	Amps @ 277v	Amps @ 24v
1x30	0.25	0.11	1.25
1x60	0.50	0.22	2.50
1x96	0.80	0.35	4.00
1x120	1.00	0.44	5.00
1x150	1.25	0.55	6.25
1x200	1.67	0.73	8.34
1x300	2.5	1.09	12.5
2x96	1.60	0.70	4.00x2
3x96	2.40	1.04	4.00x3
4x96	3.20	1.39	4.00x4

**Remote Distance Guide (Wire by Others) - 24v Output**

Model	Max #12	Max #14	Max #16	Max #18	Max #22
1x30	180'	110'	70'	45'	17'
1x60	90'	55'	35'	22'	8'
1x96	55'	35'	22'	14'	5'
1x120	45'	28'	17'	11'	4'
1x150	35'	22'	14'	9'	3'
1x200	26'	17'	10'	6'	NR
1x300	18'	11'	7'	4'	NR
2x96	55'	35'	22'	14'	5'
3x96	55'	35'	22'	14'	5'
4x96	55'	35'	22'	14'	5'

% Voltage Drop not to exceed 3%  
Distances based on max driver load  
NR = Not Recommended

